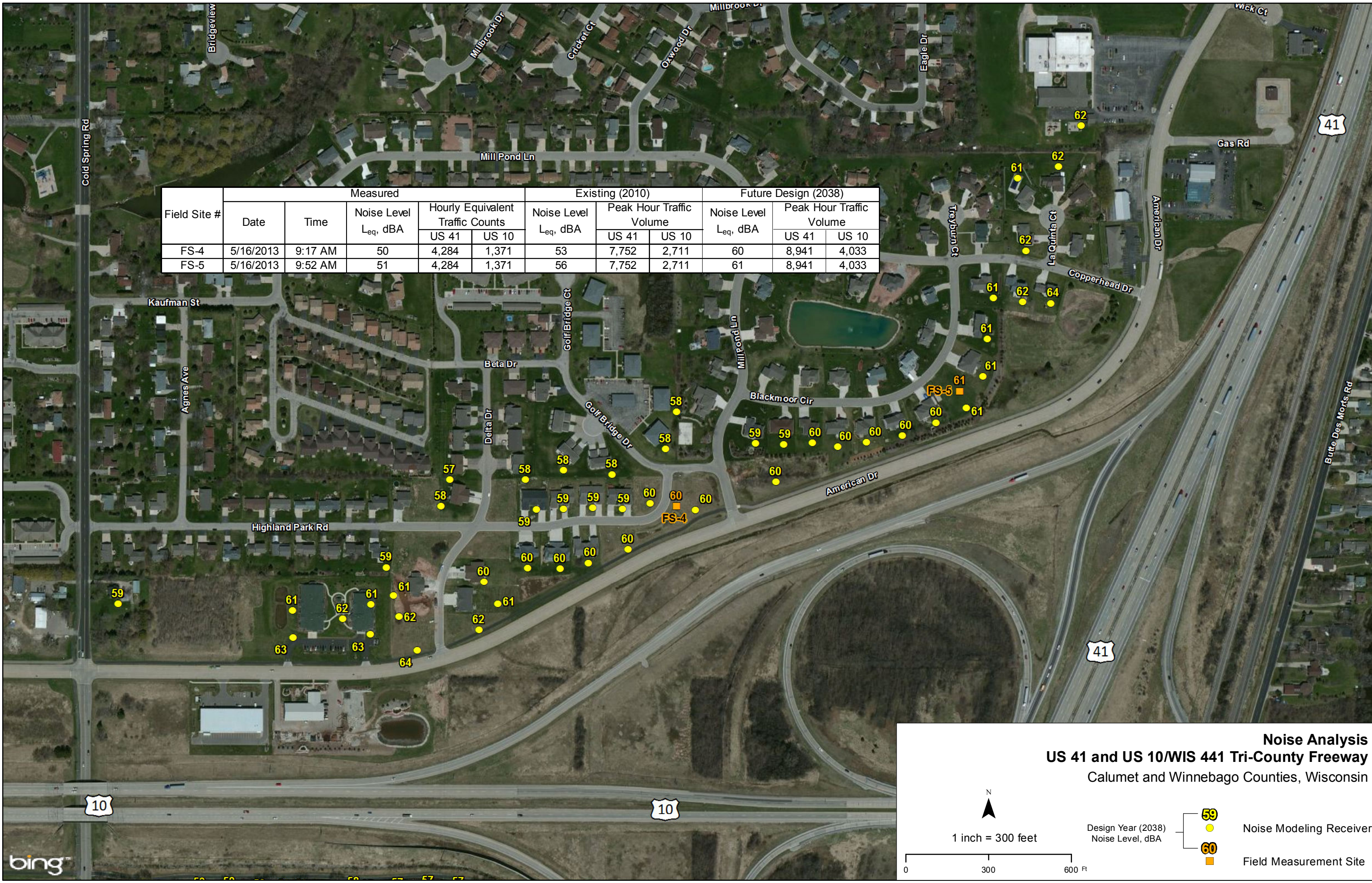


Field Site #	Measured					Existing (2010)			Future Design (2038)		
	Date	Time	Noise Level Leq, dBA	Hourly Equivalent Traffic Counts		Noise Level Leq, dBA	Peak Hour Traffic Volume		Noise Level Leq, dBA	Peak Hour Traffic Volume	
				US 41	US 10		US 41	US 10		US 41	US 10
FS-4	5/16/2013	9:17 AM	50	4,284	1,371	53	7,752	2,711	60	8,941	4,033
FS-5	5/16/2013	9:52 AM	51	4,284	1,371	56	7,752	2,711	61	8,941	4,033



Noise Analysis
US 41 and US 10/WIS 441 Tri-County Freeway
 Calumet and Winnebago Counties, Wisconsin

1 inch = 300 feet

0 300 600 Ft

Design Year (2038)
 Noise Level, dBA

- 59 ● Noise Modeling Receiver
- 60 ● Noise Modeling Receiver
- Field Measurement Site